



APPENDIX C: DEMOGRAPHIC MAPS

Hillsboro TSP Demographic Maps Summary

The following 11 demographic maps were prepared as part of the Hillsboro TSP. This exercise was conducted in order to better understand the community and inform future decisions in planning and prioritization of transportation investments and services.

The demographic maps were based on US Census Bureau’s American Community Survey (ACS) 2018 data (2014-2018 five-year data). The following steps were taken to illustrate the results:

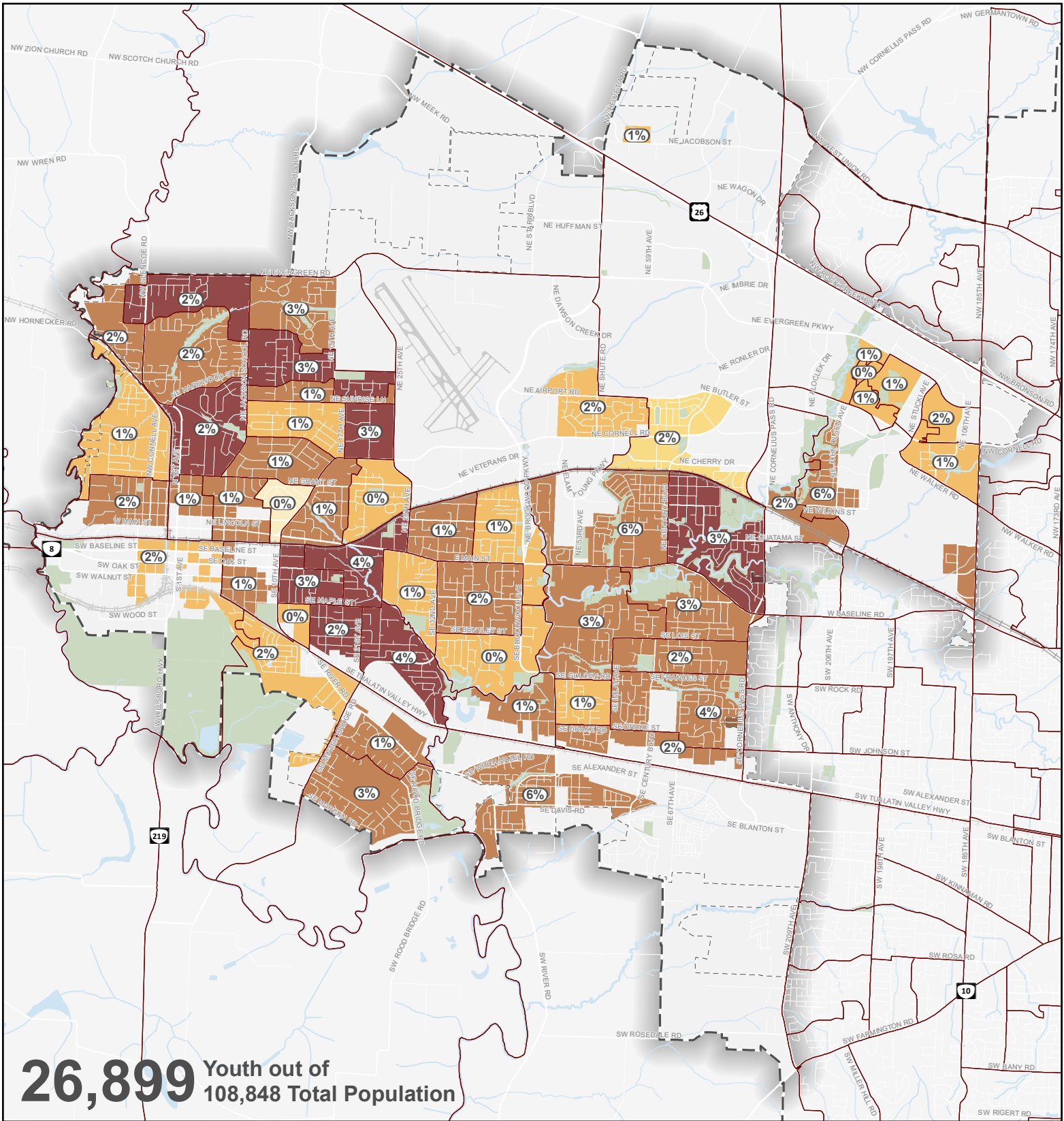
- Began with Census block groups
- Identified residential areas based on zoning designations in the city’s Zoning map
- Manually identified areas in the city that were non-conforming to the Zoning map (i.e. residential uses in commercial or industrial areas that were “grandfathered” in).
- Applied the residential “screen” established from the zoning and manual exercise to the Census block groups to create the modified, residential areas-only block groups
- Census ACS demographic data were assigned to the resulting modified, residential areas-only block groups

Two types of information are displayed in the demographic maps:

- **Distribution** – the distribution of a demographic group is shown in numerical percentage values in “bubbles”. The percentages add up to 100% for each map.
- **Concentration** – the concentration of a demographic group within each block group is shown using five color gradients; the concentration is calculated by dividing the subject population in each block group by the total population (or households, adults) within that block group.
- Note that it is possible to have a high concentration in a block group (darker color) with a low distribution percentage value (##%), or vice versa, with this method.

The total number of each of the 11 demographic groups and the percentage of the total population, households, and adults are summarized in the following table.

Demographic Groups	Count	Percent of Total
<i>Total Population</i>	108,848	100.0%
Youth Population (Under 18)	26,899	24.7%
Elderly Population (65 and Older)	11,624	10.7%
White Population	62,620	57.5%
Hispanic or Latino Population	25,186	23.1%
Asian Population	12,331	11.3%
Other Population	5,832	5.4%
Black Population	2,275	2.1%
Pacific Islander Population	555	0.5%
Native American Population	281	0.3%
<i>Total Households</i>	39,760	100.0%
Households Below Poverty	3,565	9.0%
Households without Vehicles	2,612	6.6%
Households with Limited English Proficiency	2,735	6.9%
<i>Total Adults</i>	81,063	100.0%
Disabled Adults	9,357	11.5%



26,899 Youth out of 108,848 Total Population

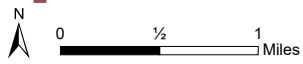
Youth Population

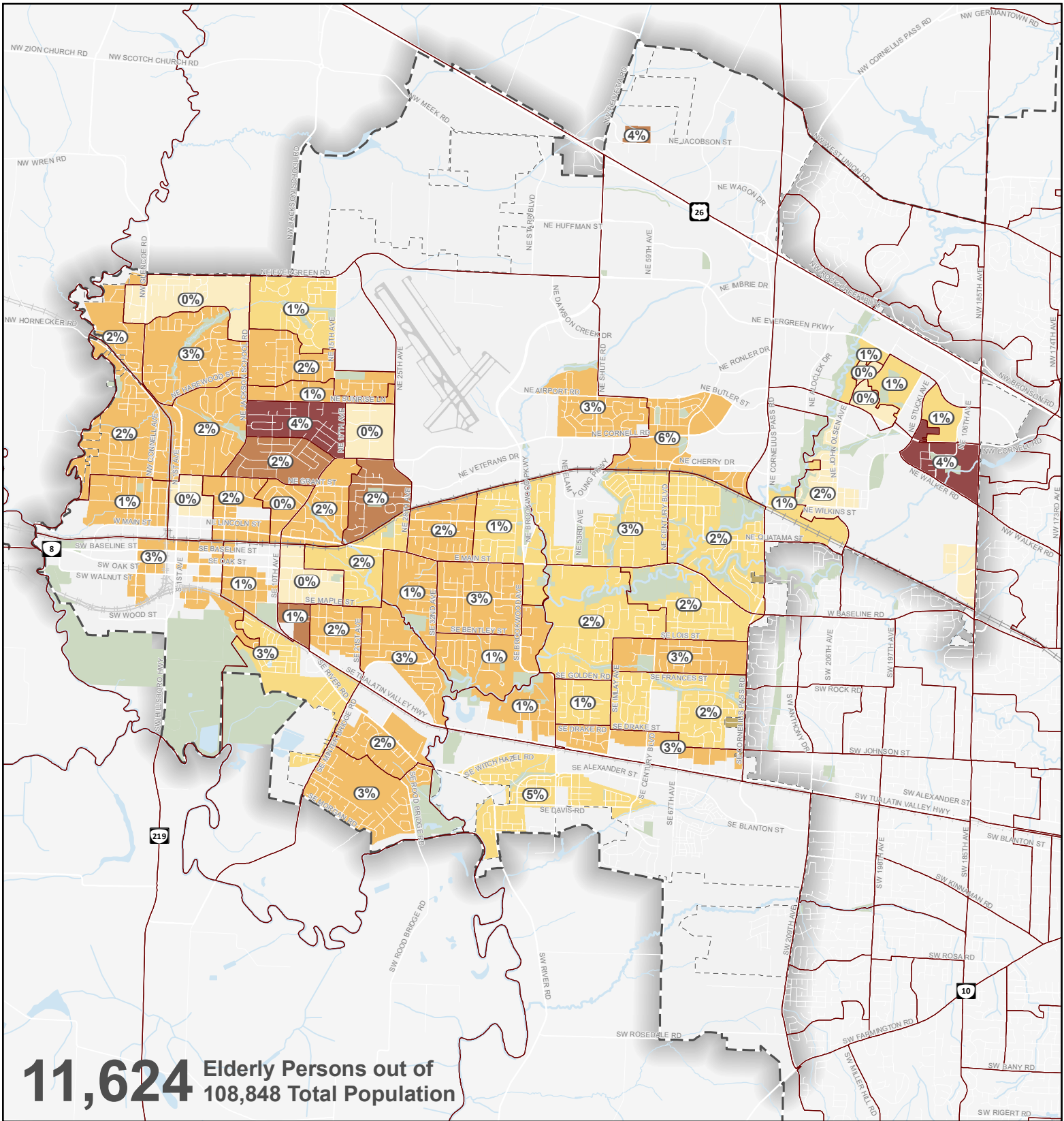
Concentration of Youth as % of Total Population in Each Block Group

- 6%
- 7% - 10%
- 11% - 20%
- 21% - 30%
- 31% - 50%

##% Distribution of Youth Across City (100% Total)

- Parks and Open Spaces
- Water Bodies
- Census Block Group Boundaries
- City Limits
- UGB





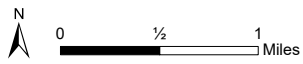
Elderly Population

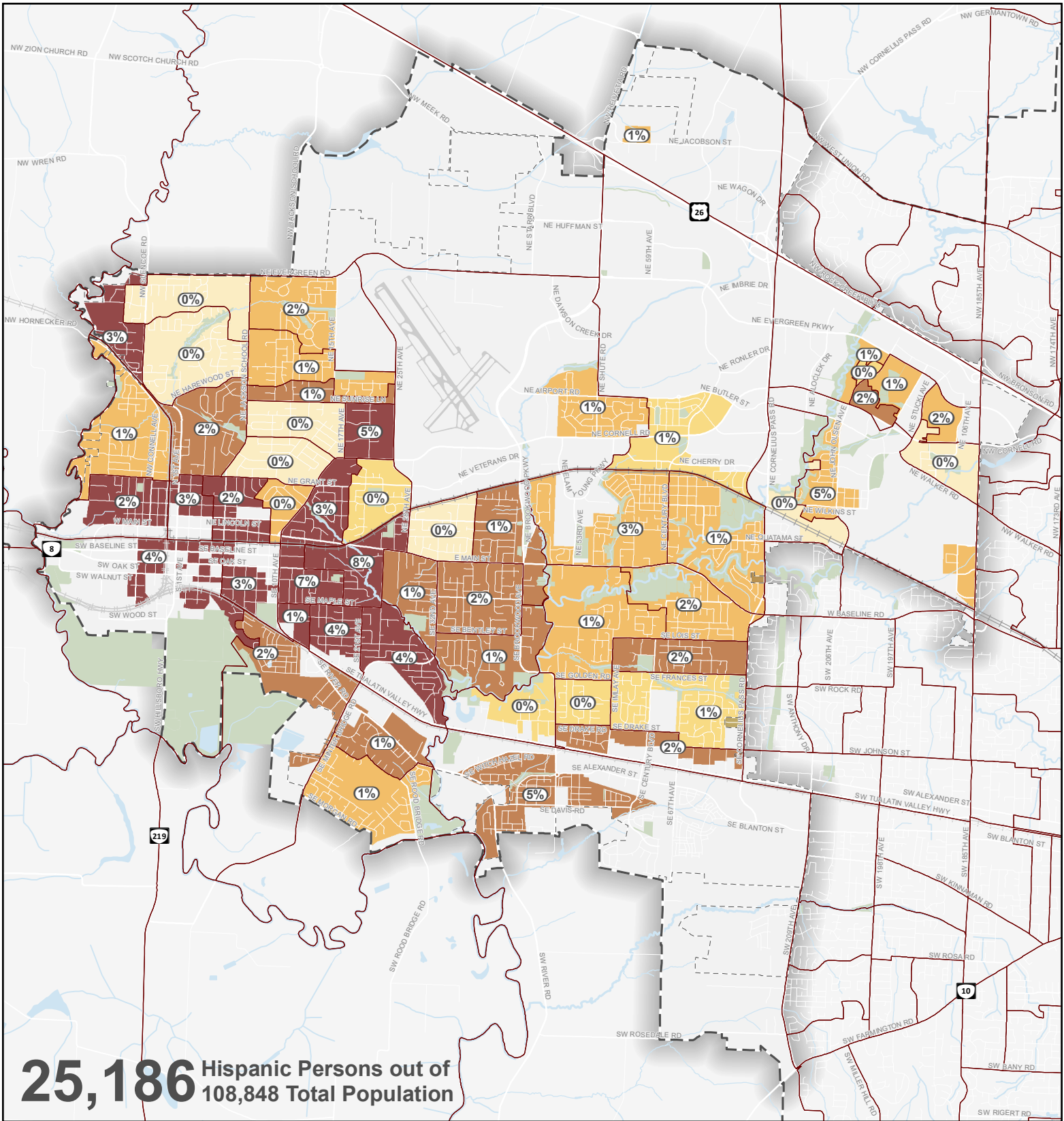
Concentration of Elderly Persons as % of Total Population in Each Block Group

- 0% - 5%
- 6% - 10%
- 11% - 20%
- 21% - 30%
- 31% - 50%

Distribution of Elderly Persons Across City (100% Total)

- Parks and Open Spaces
- Water Bodies
- Census Block Group Boundaries
- City Limits
- UGB





25,186 Hispanic Persons out of 108,848 Total Population

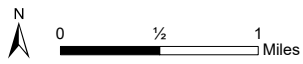
Hispanic Population

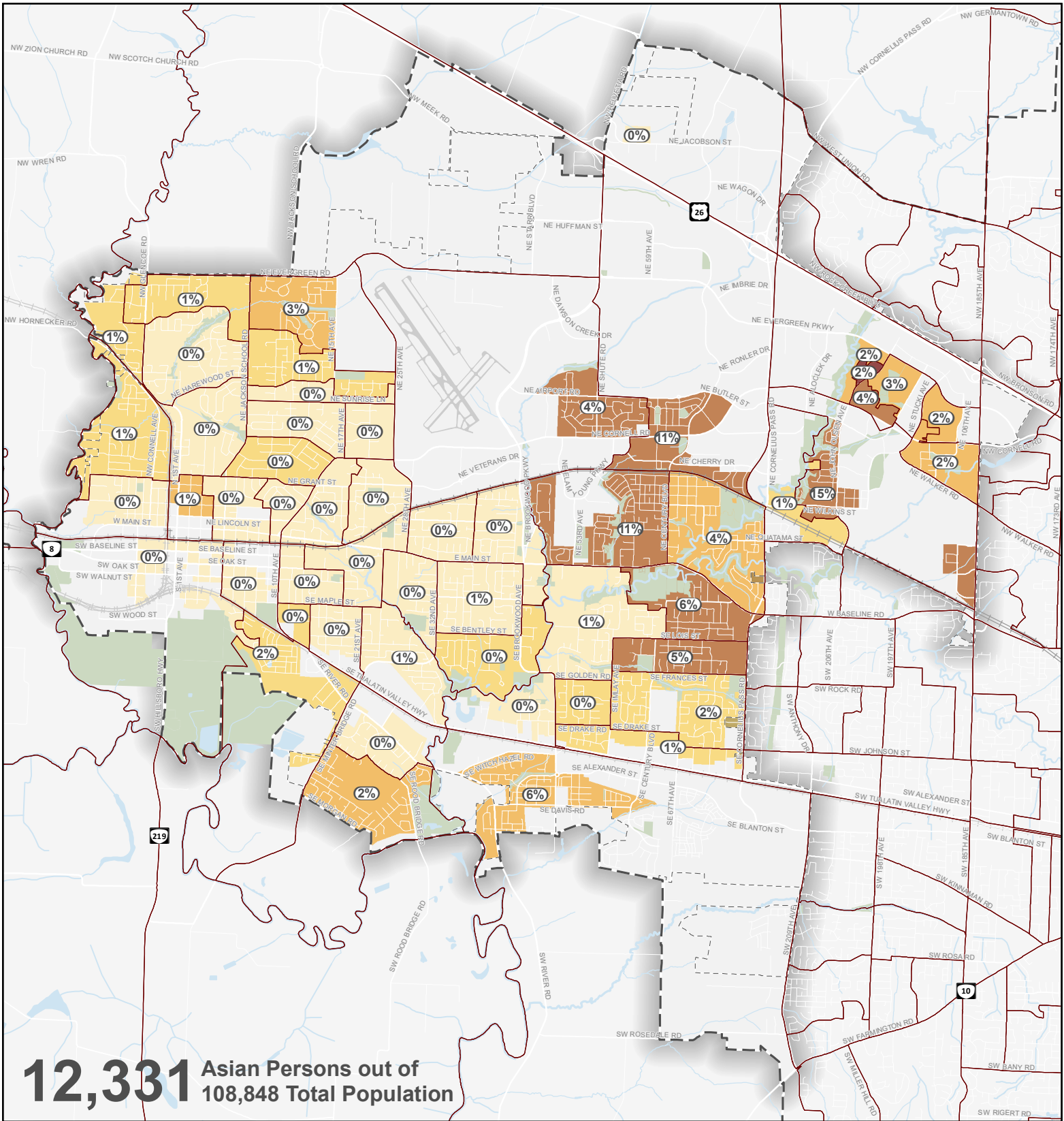
Concentration of Hispanic Population as % of Total Population in Each Block Group

- 1% - 5%
- 6% - 10%
- 11% - 20%
- 21% - 30%
- 31% - 75%

##% Distribution of Total Hispanic Population Across City (100% Total)

- Parks and Open Spaces
- Water Bodies
- Census Block Group Boundaries
- City Limits
- UGB





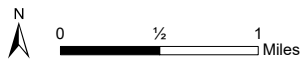
Asian Population

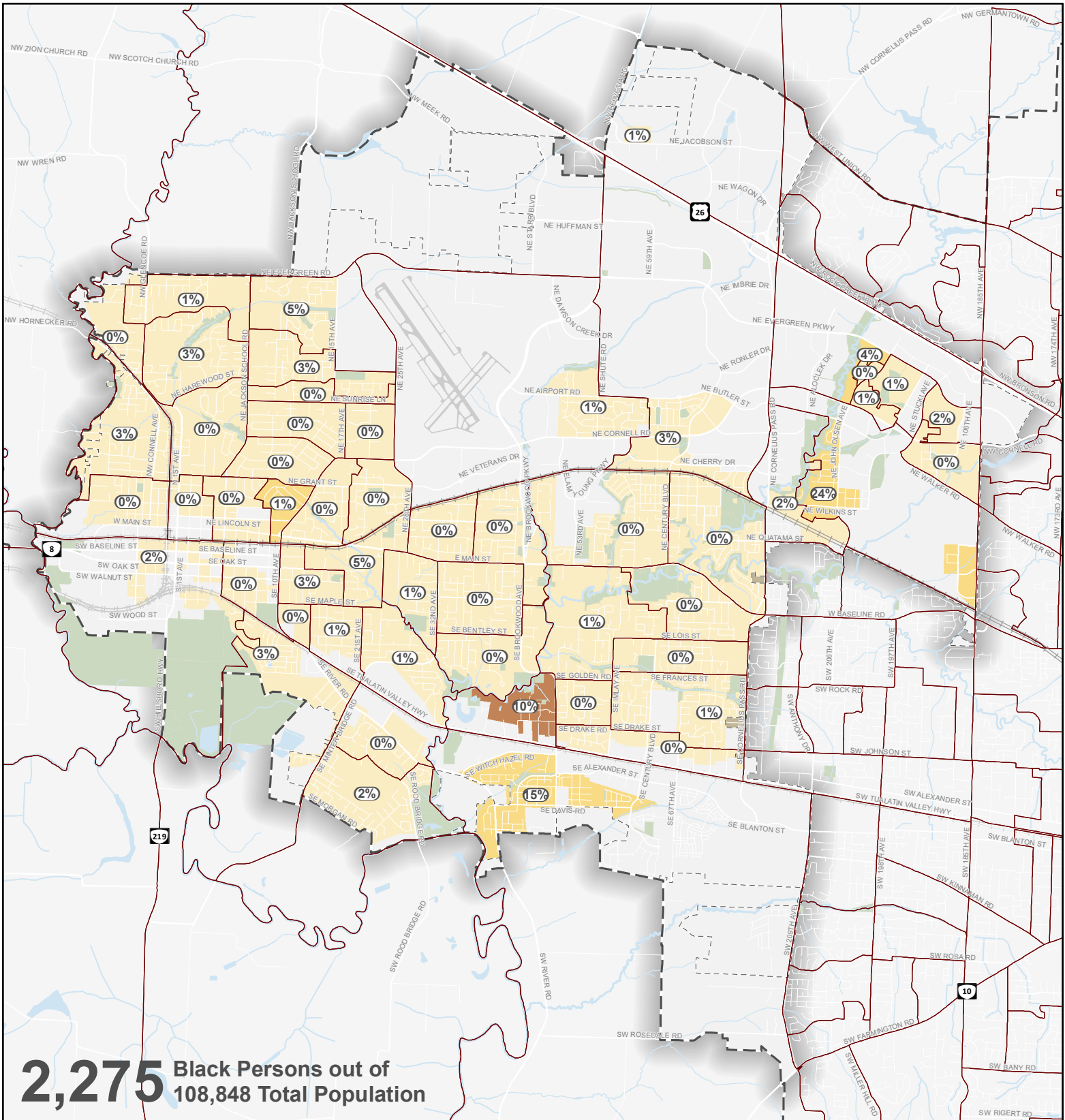
Concentration of Asian Population as % of Total Population in Each Block Group

- 0% - 5%
- 6% - 10%
- 11% - 20%
- 21% - 30%
- 31% - 50%

Distribution of Total Asian Population Across City (100% Total)

- Parks and Open Spaces
- Water Bodies
- Census Block Group Boundaries
- City Limits
- UGB





2,275 Black Persons out of
108,848 Total Population

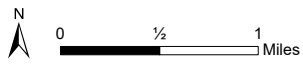
Black Population

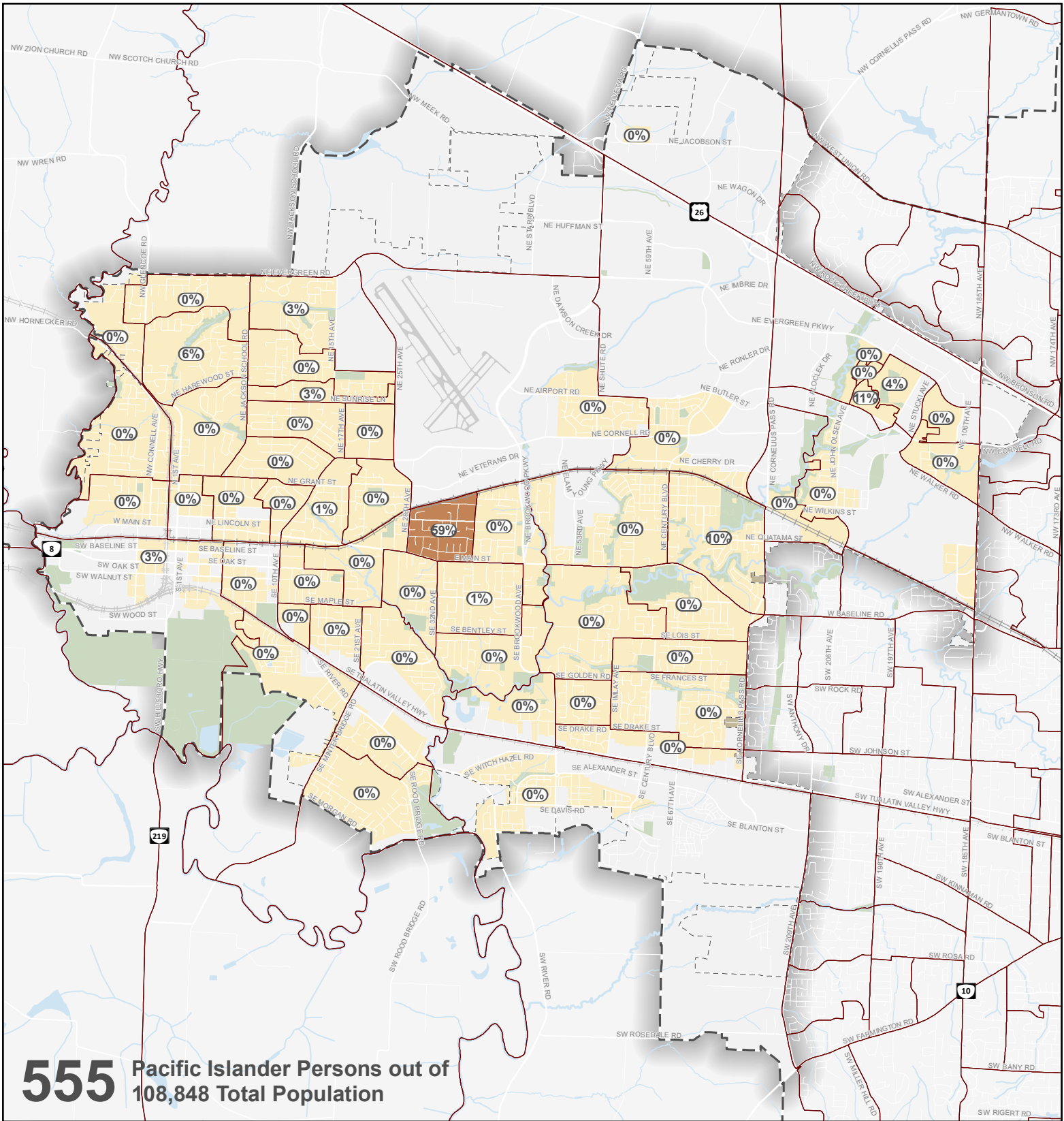
Concentration of Black Population as % of Total Population in Each Block Group

- 0% - 5%
- 6% - 10%
- 11% - 20%
- 21% - 30%
- 31% - 50%

Distribution of Total Black Population Across City (100% Total)

- Parks and Open Spaces
- Water Bodies
- Census Block Group Boundaries
- City Limits
- UGB





555 Pacific Islander Persons out of 108,848 Total Population

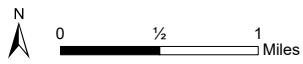
Pacific Islander Population

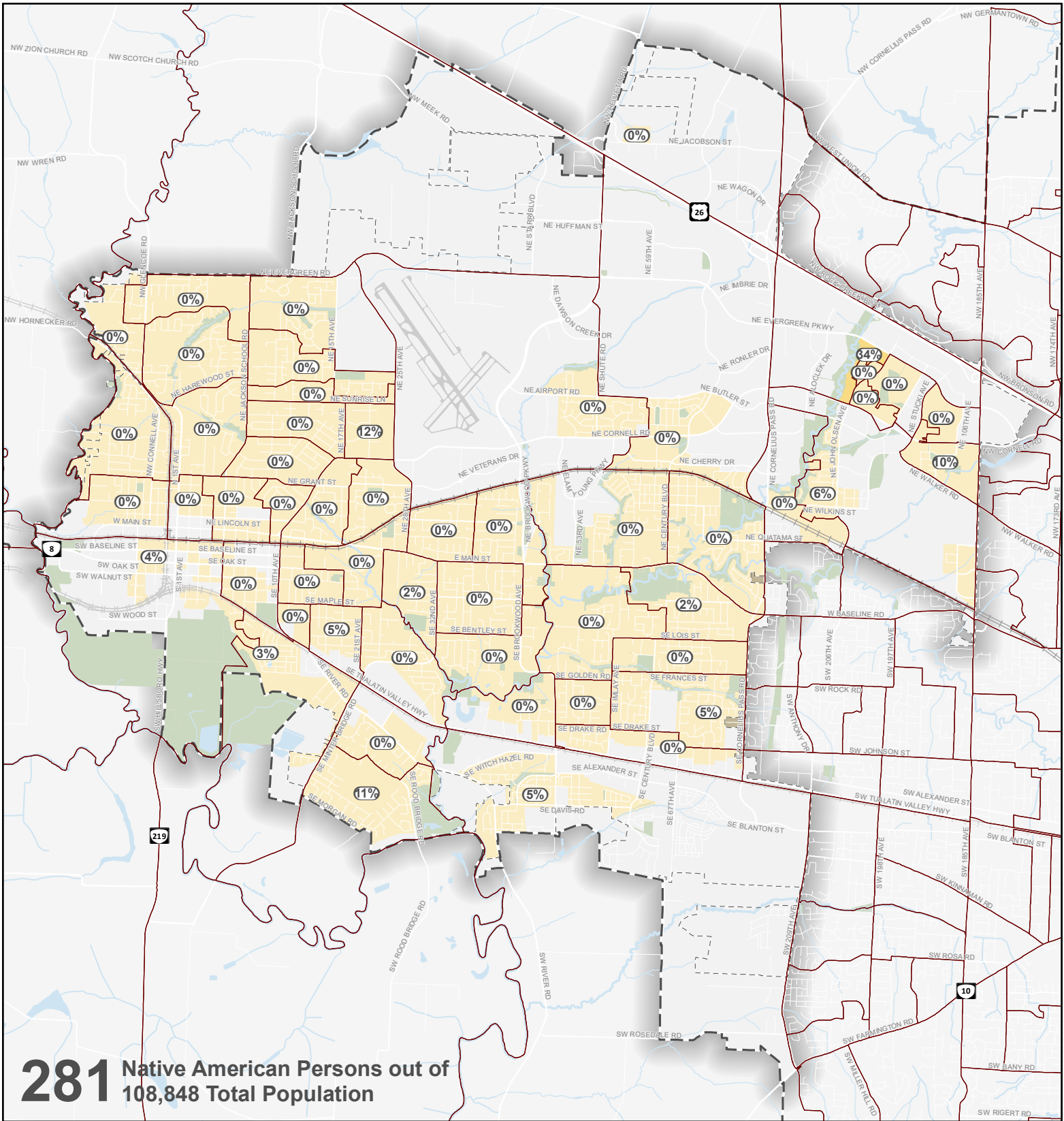
Concentration of Pacific Islander Population as % of Pacific Islander Population in Each Census Tract

- 0% - 5%
- 6% - 10%
- 11% - 20%
- 21% - 30%
- 31% - 50%

Distribution of Total Pacific Islander Population Across City (100% Total)

- Parks and Open Spaces
- Water Bodies
- Census Block Group Boundaries
- City Limits
- UGB





281 Native American Persons out of 108,848 Total Population

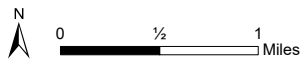
Native American Population

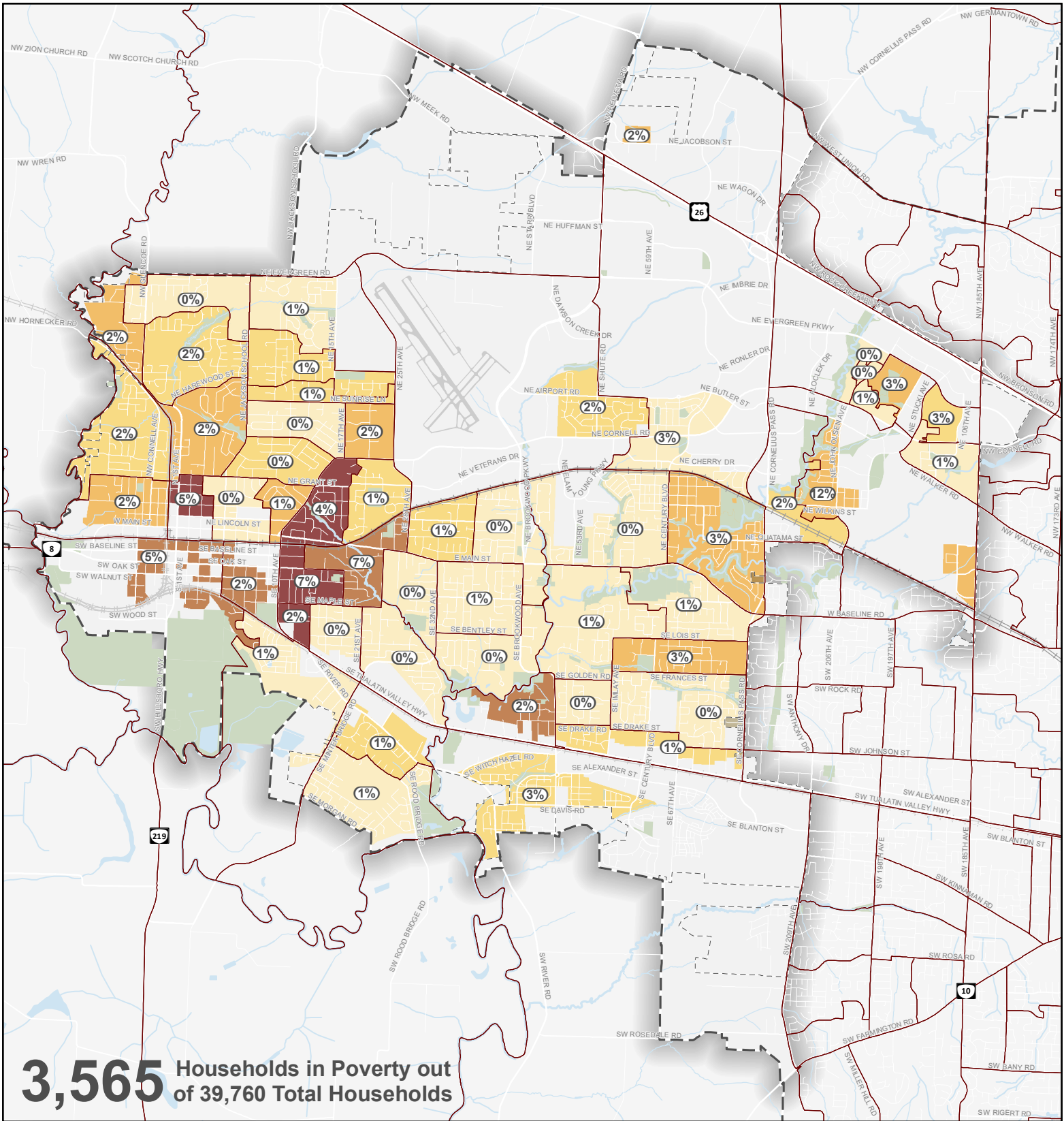
Concentration of Native American Population as % of Total Population in Each Block Group

- 0% - 5%
- 6% - 10%
- 11% - 20%
- 21% - 30%
- 31% - 50%

Distribution of Total Native American Population Across City (100% Total)

- Parks and Open Spaces
- Water Bodies
- Census Block Group Boundaries
- City Limits
- UGB





3,565 Households in Poverty out of 39,760 Total Households

Households in Poverty

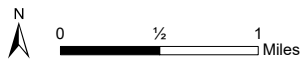
Concentration of Households in Poverty as % of Total Households in Each Block Group

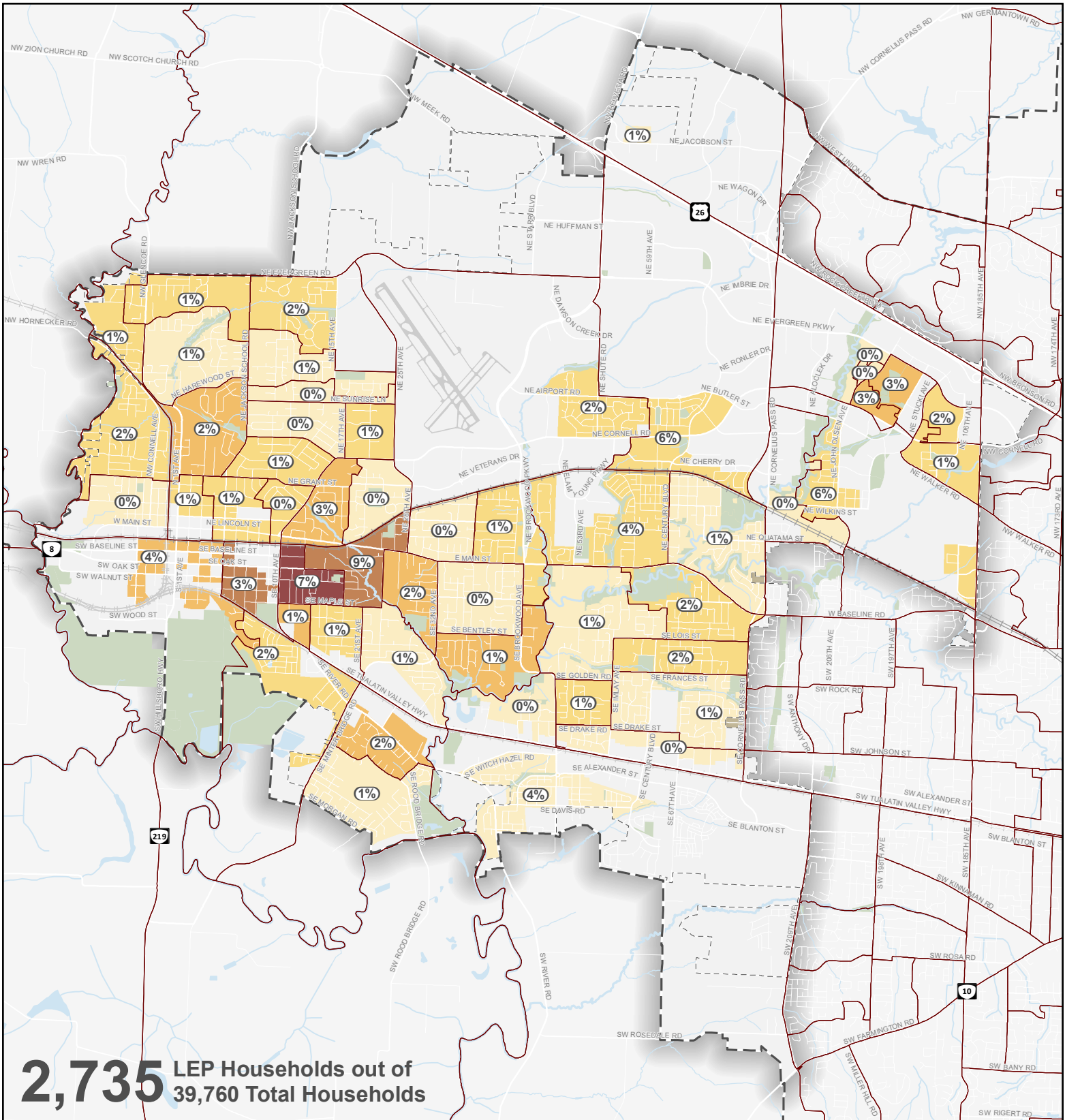
- 0% - 5%
- 6% - 10%
- 11% - 20%
- 21% - 30%
- 31% - 50%



Distribution of Total Households in Poverty Across City (100% Total)

- Parks and Open Spaces
- Water Bodies
- Census Block Group Boundaries
- City Limits
- UGB





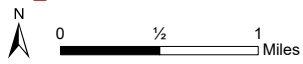
LEP (Limited English Proficiency) Households

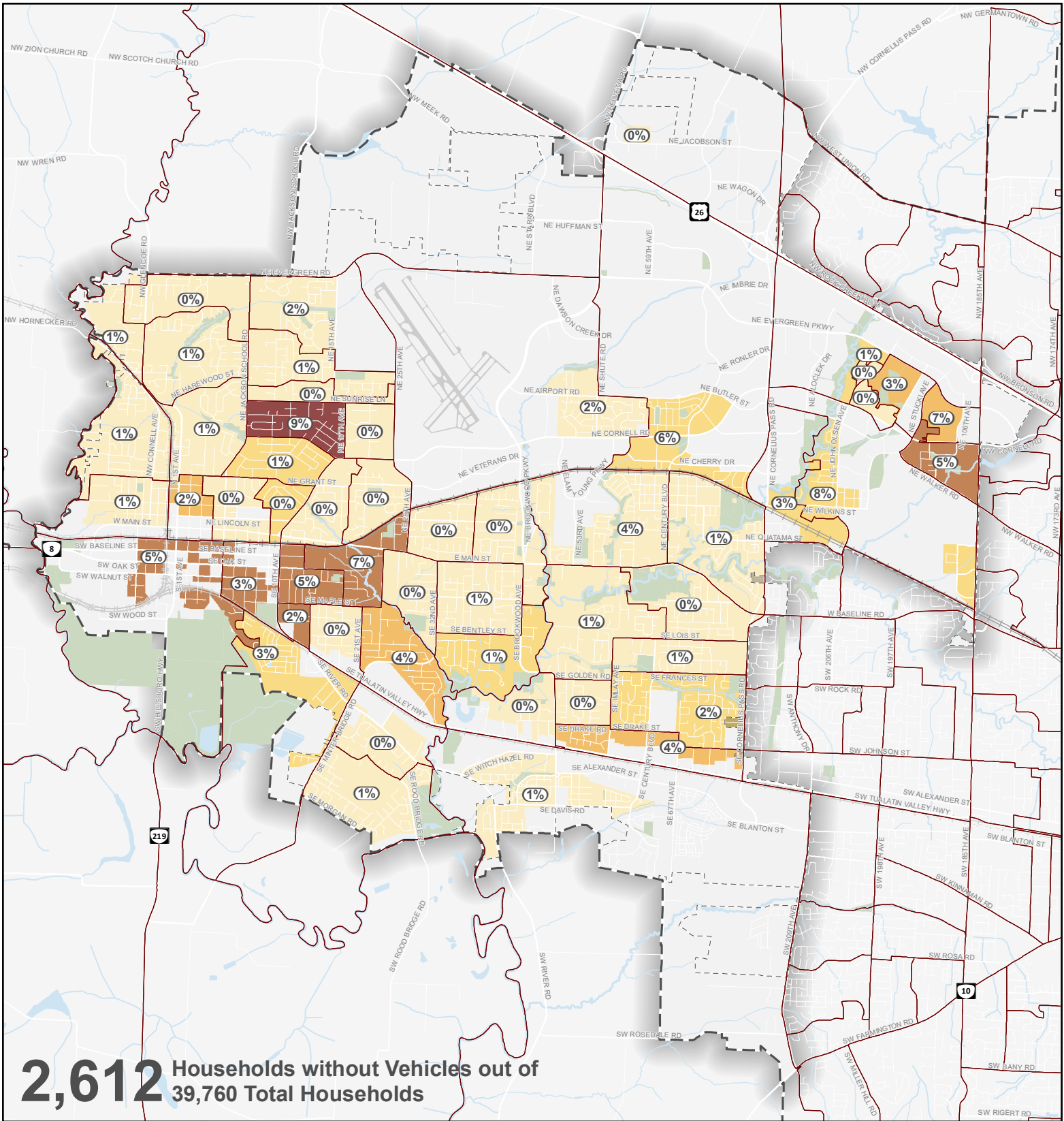
Concentration of LEP Households as % of Total Households in Each Block Group

- 1% - 5%
- 6% - 10%
- 11% - 20%
- 21% - 30%
- 31% - 50%

Distribution of Total LEP Households Across City (100% Total)

- Parks and Open Spaces
- Water Bodies
- Census Block Group Boundaries
- City Limits
- UGB





2,612 Households without Vehicles out of 39,760 Total Households

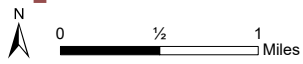
Vehicleless Households

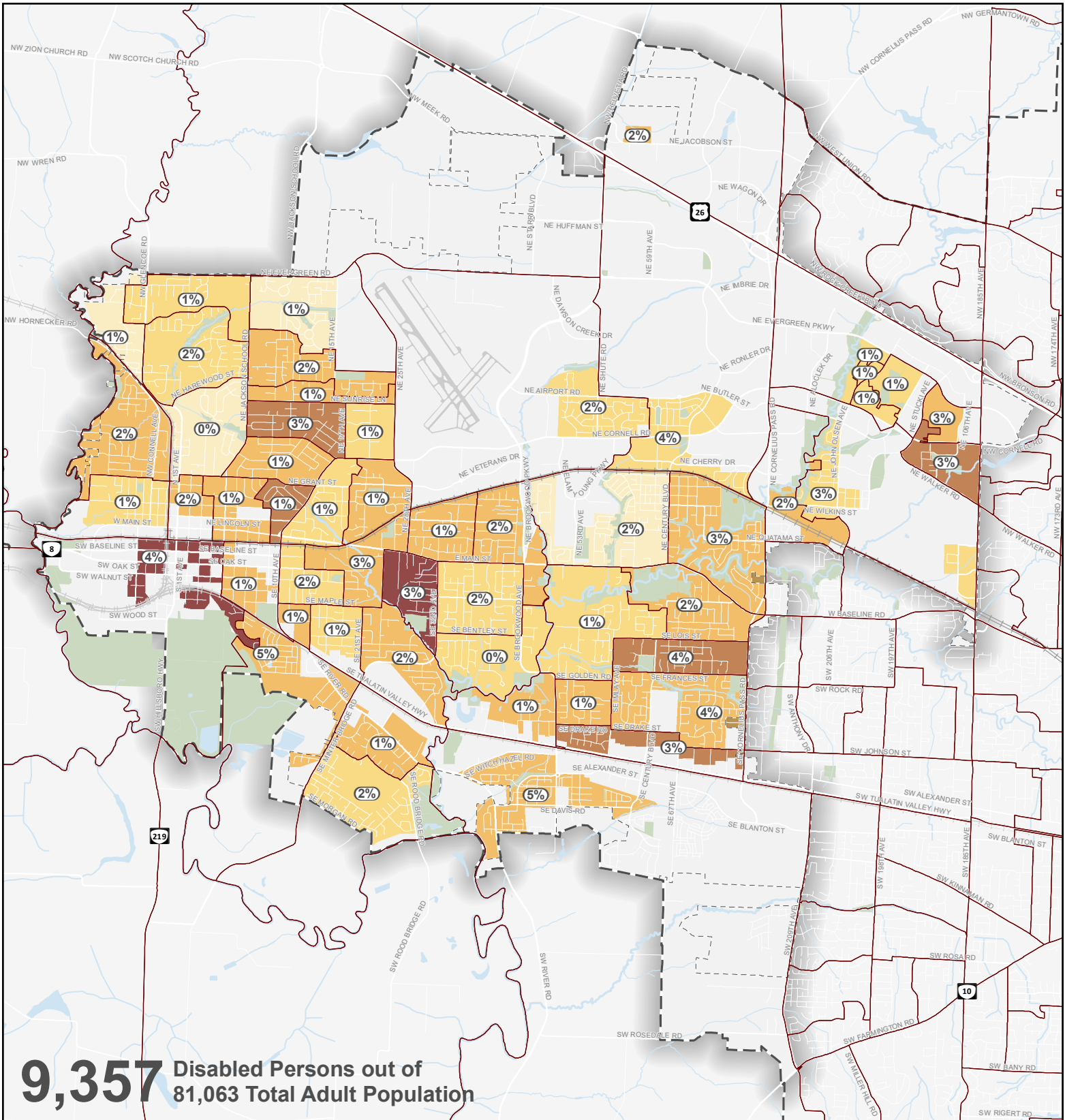
Concentration of Vehicleless Households as % of Total Households in Each Block Group

- 0% - 5%
- 6% - 10%
- 11% - 20%
- 21% - 30%
- 31% - 50%

Distribution of Total Vehicleless Households Across City (100% Total)

- Parks and Open Spaces
- Water Bodies
- Census Block Group Boundaries
- City Limits
- UGB





9,357 Disabled Persons out of
81,063 Total Adult Population

Disabled Population

Concentration of Disabled Population as % of Adult Population in Each Block Group

- 2% - 5%
- 6% - 10%
- 11% - 20%
- 21% - 30%
- 31% - 50%

Distribution of Total Disabled Population Across City (100% Total)

- Parks and Open Spaces
- Water Bodies
- Census Block Group Boundaries
- City Limits
- UGB

